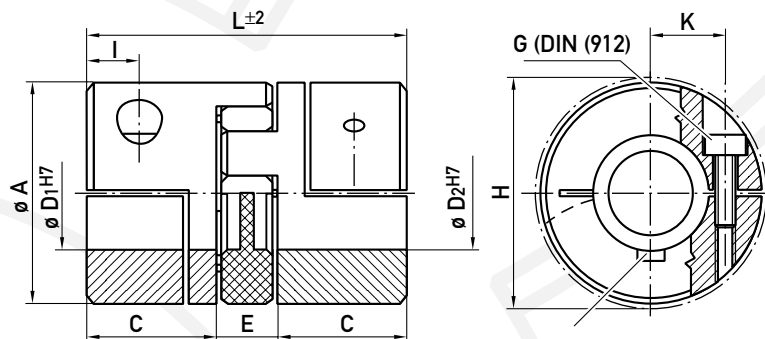


MICROFLEX

BACKLASH-FREE SERVO-INSERT COUPLINGS

Type SE2 with clamping hub



Keyway according to DIN 6885¹⁾ on demand

Ordering data

SE2 38/45	30 ^{H7}	35 ^{H7}	XX
Type			
Bore diameter D ₁			
Bore diameter D ₂			
Further details, e.g. special material, keyway 3)			

Technical Data – Type SE2

SIZE			14	19/24	24/28	28/38	38/45	42/55	48/60
Nominal torque (Nm)	T_{KN}		12,5	17	60	160	325	450	525
Torsional stiffness (Nm/rad)	$C_{T\ dyn}$		513	2580	4380	6189	10314	21486	55925
Radial spring (N/mm)	C_r		604	2010	2290	2560	3200	4400	5930
Moment of inertia (10^{-3} Kg m^2)	$J_{\text{ per hub}}$		0,0024	0,017	0,07	0,16	0,47	3,14	5,52
Tightening torque of retaining screws (Nm)			5	10	10	18	43	84	145
Weight per hub (kg)			0,045	0,18	0,31	0,55	1,05	4,9	7
Max. approved misalignment									
- radial (mm)			0.06	0.06	0.08	0.1	0.11	0.12	0.16
- axial (mm)			1	1.2	1.3	1.4	1.5	1.8	2.1
- angular (degree)			0.9	0.9	0.9	0.9	0.9	0.9	0.9
Maximum rpm			19000	14000	10600	8500	7100	6000	5600

Dimensional Data (mm) – Type SE2

SIZE	14	19/24	24/28	28/38	38/45	42/55	48/60
$L_{\pm 2}$	35	66	78	90	114	126	140
$\varnothing A$	30	40	45	55	65	80	105
C	11	25	26.5	30	35	45	56
$\varnothing D_1^{H7} / \varnothing D_2^{H7}$ 2)							
- min.	9	10	12	19	24	32	40
- max.	16	23	24	30	35	45	60
E	13	16	17	18	20	24	28
I	5	12	10	11	13	14	15
H (clearance diameter)	34	45	47	57	70	89	111
G (DIN 912)	M4	M5	M5	M6	M8	M10	M12
K	10.5	15	17	20	24	30	40

- Temperature range: -30 °C to +90 °C

- Ring gear material: Polyurethane Sh 98 A further shore hardnesses Sh 92 A / Sh 64 D

- Hubs 14 to 38/45 are made of aluminum

- Hub 42/55 and 48/60 are made of steel

1) Tolerance of keyway: Standard JS9

2) Smaller \varnothing possible for lower transfer moments.

3) Stainless steel version also available.