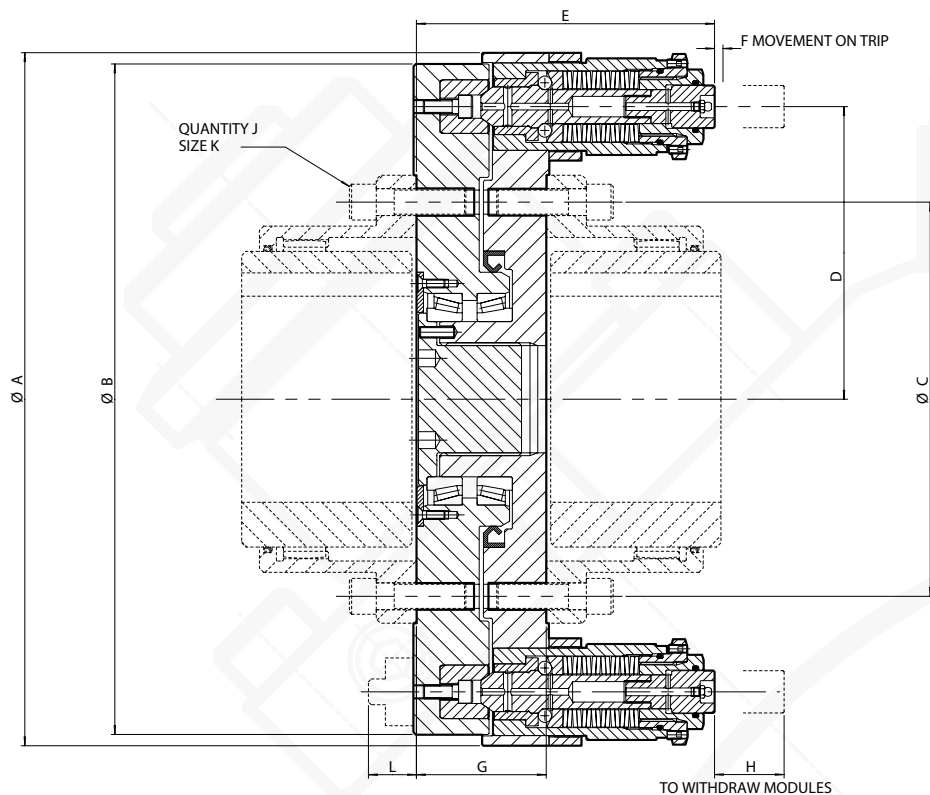


AUTOGARD SERIES 820

TYPE 4

Design to accept standard Full Flex AGMA Gear Couplings



Technical Data

Size	Modules (Size-No.)	Maximum Trip Torque (Nm)	Minimum Trip Torque (Nm)	Max. Speed (RPM) ①	Mass (kg) ②	Moment of Inertia mr^2 (kgm^2) ②
2.5	2-4	11300	2825	1900	54	0.67
3.0	2-5	15700	3925	1700	65	0.98
3.5	3-4	29000	7250	1300	136	3.83
4.0	3-5	38200	9550	1200	151	4.70
4.5	3-7	59700	14925	1200	186	7.12
5.0	3-8	69200	17300	1200	194	7.64
5.5	4-5	106500	26625	1100	278	15.36
6.0	4-7	157700	39425	1000	323	19.92
7.0	4-7	177000	44250	900	474	33.26

1) Balancing may allow up to 50% increase in speeds shown - refer to Autogard

2) Mass and moment of inertia values excluding gear coupling.

Dimensional Data - mm

Size	AGMA Gear Coupling Size	A	B	C	D	E	F	G	H	J	K	L
2.5	2.5	329	317	181.0	139.0	147.1	5	91.5	34	6	5/8"	-
3.0	3.0	359	347	206.4	154.0	147.1	5	91.5	34	8	5/8"	-
3.5	3.5	470	454	241.3	196.7	209.3	6	92.0	50	8	3/4"	-
4.0	4.0	491	475	279.4	207.4	209.3	6	92.0	50	8	3/4"	-
4.5	4.5	540	524	304.8	231.7	209.3	6	92.0	50	10	3/4"	-
5.0	5.0	546	530	342.9	234.9	211.8	6	92.0	50	8	7/8"	-
5.5	5.5	648	612	368.3	269.7	256.3	8	92.0	68	14	7/8"	43
6.0	6.0	678	643	400.1	285.1	257.3	8	93.0	68	14	7/8"	42
7.0	7.0	748	712	463.6	320.0	297.7	8	133.0	68	16	1"	-

3) The 820 Type 4 Torque Limiter can be supplied with or without the gear coupling.

Please advise at time of ordering.