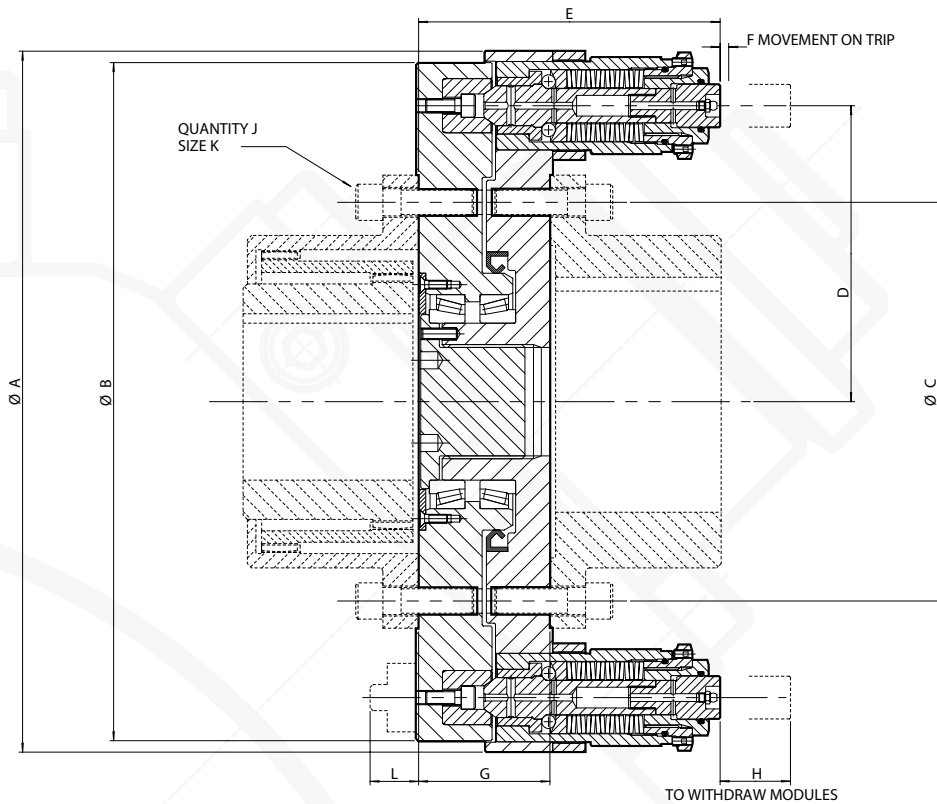


AUTOGARD SERIES 820

TYPE 5

Design to accept (DE) Double Engagement Flex Half Gear Couplings



Technical Data

| Size | Modules (Size-No.) | Maximum Trip Torque (Nm) | Minimum Trip Torque (Nm) | Max. Speed (RPM) | Mass (kg) ① | Moment of Inertia m ² (kgm ²) ① |
|------|--------------------|--------------------------|--------------------------|------------------|-------------|--|
| 2.5 | 2-4 | 11300 | 2825 | 3000 | 54 | 0.67 |
| 3.0 | 2-5 | 15700 | 3925 | 2700 | 65 | 0.98 |
| 3.5 | 3-4 | 29000 | 7250 | 1900 | 136 | 3.83 |
| 4.0 | 3-5 | 38200 | 9550 | 1800 | 151 | 4.70 |
| 4.5 | 3-7 | 59700 | 14925 | 1800 | 186 | 7.12 |
| 5.0 | 3-8 | 69200 | 17300 | 1800 | 194 | 7.64 |
| 5.5 | 4-5 | 106500 | 26625 | 1500 | 278 | 15.36 |
| 6.0 | 4-7 | 157700 | 39425 | 1400 | 323 | 19.92 |
| 7.0 | 4-7 | 177000 | 44250 | 1300 | 474 | 33.26 |

1) Mass and moment of inertia values excluding gear coupling flex half and rigid half.

Dimensional Data - mm

| Size | AGMA Gear Coupling Size | A | B | C | D | E | F | G | H | J | K | L |
|------|-------------------------|-----|-----|-------|-------|-------|---|-------|----|----|------|----|
| 2.5 | 2.5 | 329 | 317 | 181.0 | 139.0 | 147.1 | 5 | 91.5 | 34 | 6 | 5/8" | - |
| 3.0 | 3.0 | 359 | 347 | 206.4 | 154.0 | 147.1 | 5 | 91.5 | 34 | 8 | 5/8" | - |
| 3.5 | 3.5 | 470 | 454 | 241.3 | 196.7 | 209.3 | 6 | 92.0 | 50 | 8 | 3/4" | - |
| 4.0 | 4.0 | 491 | 475 | 279.4 | 207.4 | 209.3 | 6 | 92.0 | 50 | 8 | 3/4" | - |
| 4.5 | 4.5 | 540 | 524 | 304.8 | 231.7 | 209.3 | 6 | 92.0 | 50 | 10 | 3/4" | - |
| 5.0 | 5.0 | 546 | 530 | 342.9 | 234.9 | 211.8 | 6 | 92.0 | 50 | 8 | 7/8" | - |
| 5.5 | 5.5 | 648 | 612 | 368.3 | 269.7 | 256.3 | 8 | 92.0 | 68 | 14 | 7/8" | 43 |
| 6.0 | 6.0 | 678 | 643 | 400.1 | 285.1 | 257.3 | 8 | 93.0 | 68 | 14 | 7/8" | 42 |
| 7.0 | 7.0 | 748 | 712 | 463.6 | 320.0 | 297.7 | 8 | 133.0 | 68 | 16 | 1" | - |

2) The 820 Type 5 Torque Limiter can be supplied with or without the gear coupling. Please advise at time of ordering.