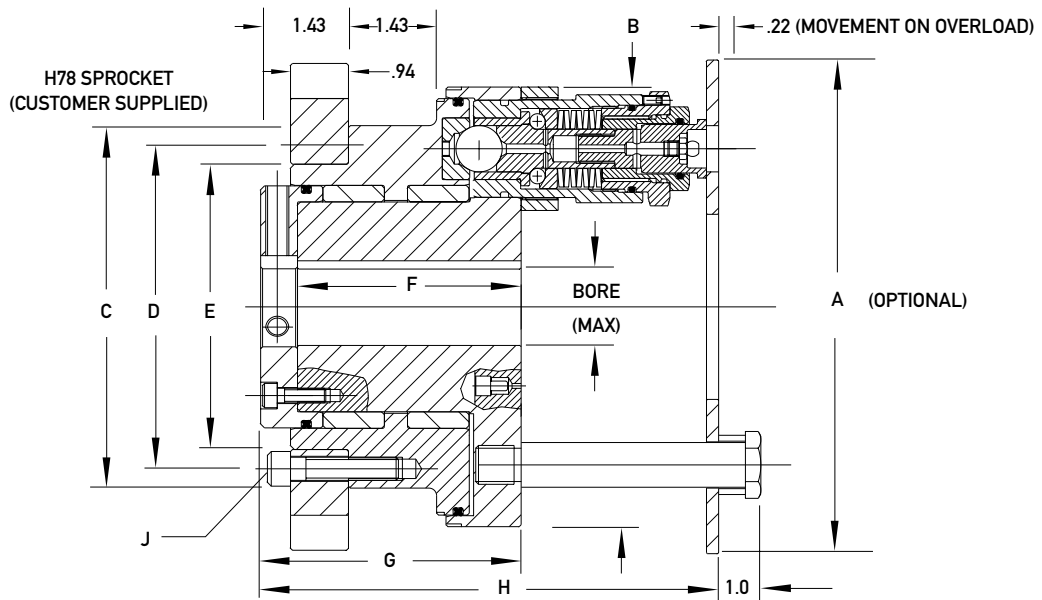


AUTOGARD SERIES WT



Technical Details

			WT Size			
	Module Type	# Modules	1	2	3	4
Max. Torque (in.-lbs.)	Low Torque	1	5,000	6,000	7,000	10,000
		2	10,000	12,000	14,000	20,000
		4	N/A	N/A	N/A	40,000
	High Torque	1	7,500	9,000	11,000	15,000
		2	15,000	18,000	22,000	30,000
		4	N/A	N/A	N/A	60,000
Smallest H78 Sprocket (Min. teeth)			9	9	10	11

Note: Minimum torque for each configuration is approximately 20% of the maximum torque value.

Dimensional Details

Size	1	2	3	4
Maximum Bore	1.750	2.250	3.000	3.750
A	7.2	8.0	8.8	11.2
B	5.95	6.75	7.55	9.95
C	5.13	5.88	6.63	7.25
D	4.50	5.25	5.75	6.60
E	3.640	4.625	4.724	6.000
F	3.48	3.48	3.48	3.88
G	4.1	4.1	4.1	4.5
H	7.2	7.2	7.2	7.6
J	6 - .375 UNC X 1.75	6 - .375 UNC X 1.75	6 - .500 UNC X 1.75	8 - .375 UNC X 1.75