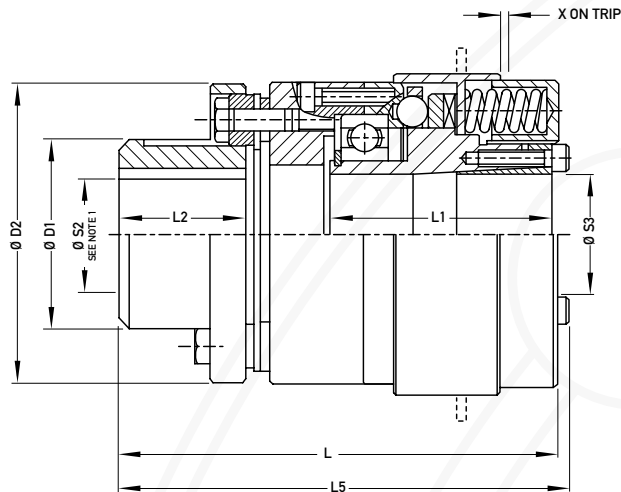
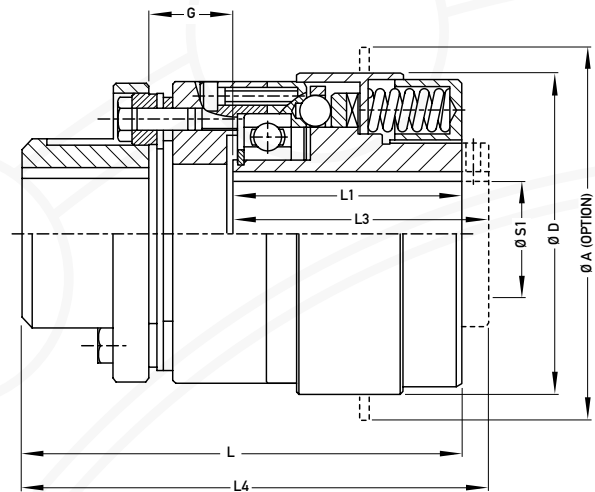


AUTOGARD SERIES 320

TORSIONALLY RIGID AUTOFLEX COUPLING



Type 5



Type 6

Technical Data - Type 5 and Type 6

Size		01	0	1	2	3	4
Torque - Nm	Minimum	5	10	20	40	80	150
	Maximum	50	100	200	400	700	1500
Weight - Kg		2.24	3.04	4.75	8.05	13.22	25.39
Mass Moment of Inertia	Hub Side	0.0013	0.0017	0.0038	0.0097	0.0213	0.0662
	Flange Side	0.0011	0.0013	0.0030	0.0073	0.0159	0.0514
Maximum Axial Misalignment (mm)		0.66	0.66	0.76	0.97	1.12	1.47
Maximum Angular Misalignment (degrees)		0.5	0.5	0.5	0.5	0.5	0.5

Dimensional Data (mm) - Type 5 and Type 6

Size		01	0	1	2	3	4
Bore (S3) - Clamped Collar	Minimum	10	15	22	32	35	42
	Maximum	20	28	35	45	55	65
Bore (S2) - Keyed Hub	Maximum	30	30	40	50	70	90
Bore (S1) - Keyed Hub	Maximum	20	23	32	40	50	58
A		80	100	116	140	160	190
D		68	84	100	120	132	166
D1		44	44	53	71	91	123
D2		80	80	89	110	133	170
G		19	24	23	31	27	30
L		99	118	132	162	180	214
L1		47	61	72	85	95	110
L2		32.5	32.5	36.5	46.0	57.5	73.5
L3		52	68	80	95	105	122
L4		104	125	140	172	190	226
L5		102	122	136	166	185	222
X		1.2	1.6	1.7	2.2	2.4	2.8

1) Clamp Bushes and Ringfeder™ Collars may be supplied upon request - Consult your Autogard Sales Engineer.
 2) Weights and Inertia values are for unbored units.